

United States Bankruptcy Court  
District of New Mexico

April 1, 2024  
CM/ECF Real Time Statistics  
**March 2024 Report**

Capsule View	Mar 2024	Feb 2024	Mar 2023	% Change	
	this month	last month	this month last year	from last month	from this month last year
<b>Bankruptcies Filed</b>					
Chapter 7	117	86	91	36.05%	28.57%
Chapter 11	0	1	0	-100%	0%
Chapter 12	0	0	0	0%	0%
Chapter 13	19	8	20	137.5%	-5%
<b>TOTAL BANKRUPTCY FILINGS</b>	136	95	111	43.16%	22.52%
<b>Adversaries</b>					
Adversaries Filed	3	2	19	50%	-84.21%
YEAR-TO-DATE	2024(CY)	2023(LY)	% Change		
<b>BANKRUPTCIES FILED<sup>2</sup></b>			<b>CY - LY</b>		
Chapter 7	295	216	36.57%		
Chapter 11	2	0	200%		
Chapter 12	0	0	0%		
Chapter 13	39	51	-23.53%		
<b>TOTAL FILINGS</b>	336	267	25.84%		
<b>BANKRUPTCIES PENDING<sup>(1)(2)</sup></b>					
Chapter 7	457	457	0%		
Chapter 11	21	17	23.53%		
Chapter 12	0	0	0%		
Chapter 13	603	652	-7.52%		
<b>TOTAL PENDING</b>	1,081	1,126	-4%		
<b>ADVERSARY PROCEEDINGS</b>					
Filed	10	25	-60%		
<b>TOTAL PENDING<sup>1</sup></b>	41	52	-21.15%		
<b>AVERAGES</b>					
Chapter 7 Average Disposition <sup>3</sup> in Days	130	173	-24.86%		
Chapter 13 Average Disposition <sup>3</sup> in Days	1142	1135	0.62%		
Chapter 13 Average Days to Confirmation	173	127	36.22%		

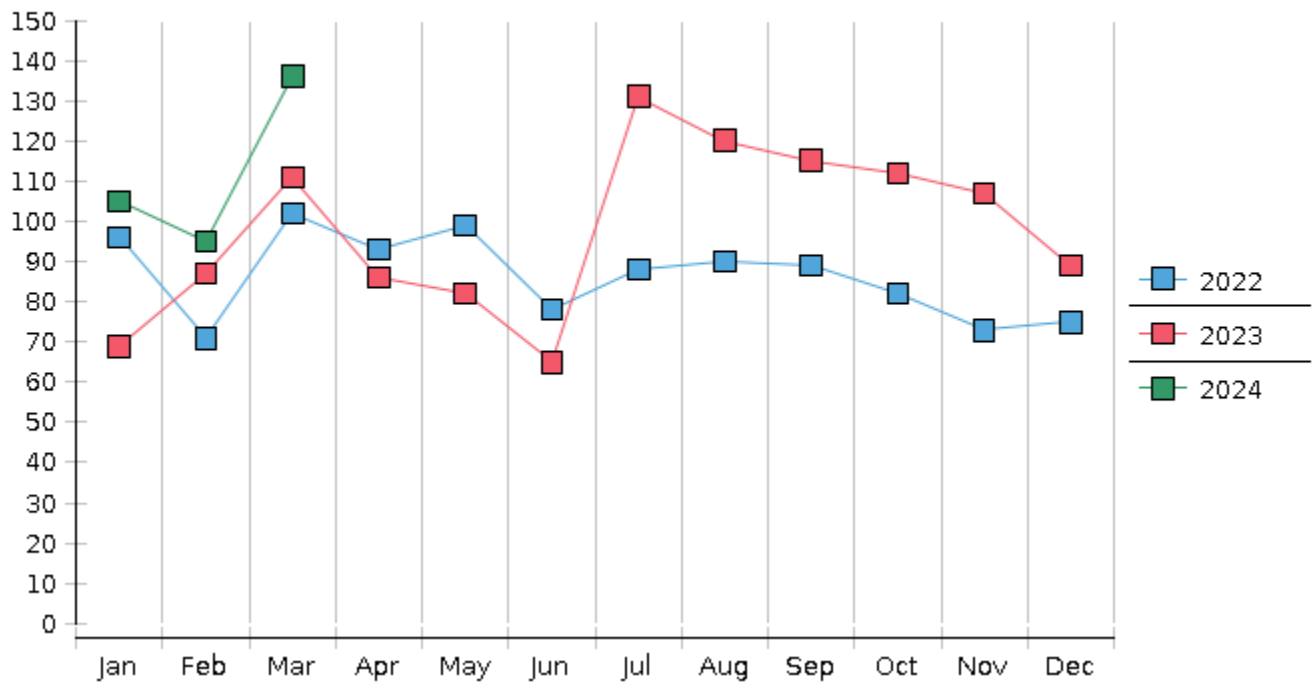
1 Pending totals are generated from CM/ECF on a time frame ending on the last day of the month.

2 Chapter breakdowns are pulled from the Dynamic CM/ECF Database and may change over time due to conversions or other case changes.

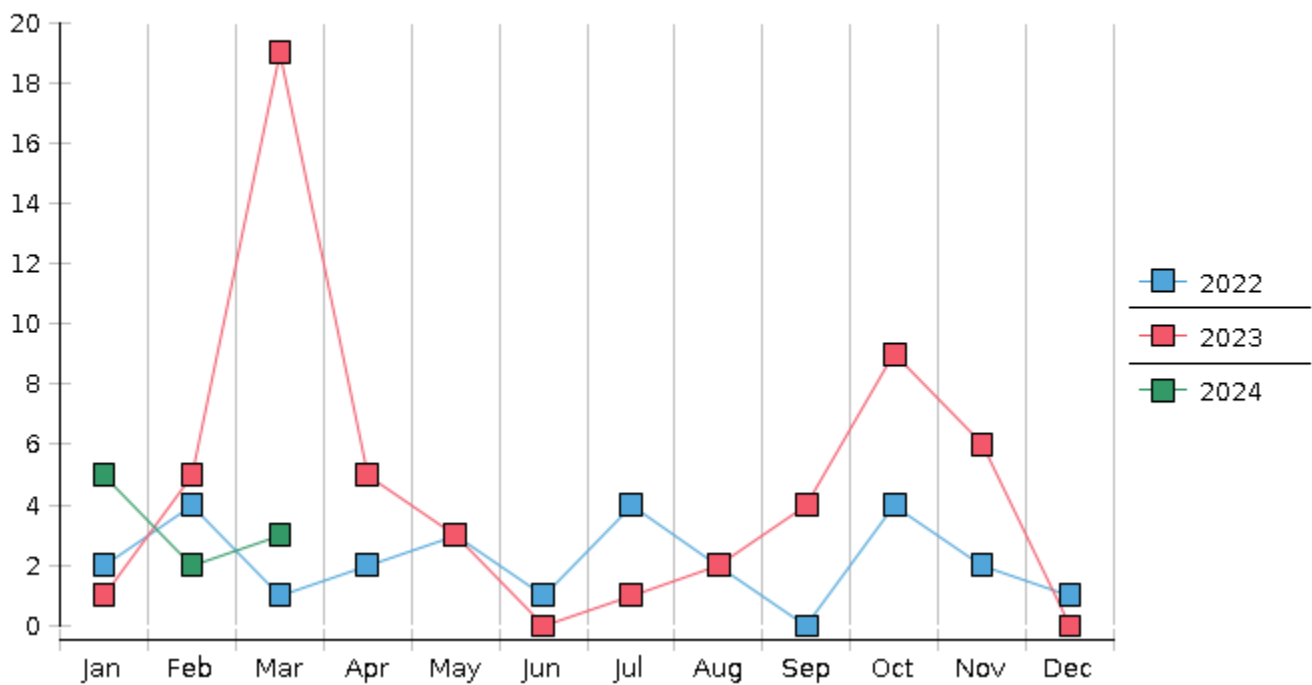
3. Average disposition represents number of days from filing to discharge/dismissal of case.



## Monthly Bankruptcy Filings



## Monthly Adversary Filings



United States Bankruptcy Court - District of New Mexico

Pro Se Filings

	Jan	Feb	Mar	Apr	May	Jun	Jul	Aug	Sep	Oct	Nov	Dec	YTD Total
2023	69	87	111	86	82	65	131	120	115	112	107	89	1,174
pro se 7	6	5	3	5	7	2	6	6	10	6	6	4	66
pro se 13	0	1	4	2	2	1	0	2	2	2	2	3	21
pro se with BPP	1	1	0	2	2	0	2	0	2	2	0	1	13
% Of Bankruptcies Filed	8.7%	6.9%	6.31%	8.14%	10.98%	4.62%	4.58%	6.67%	10.43%	7.14%	7.48%	7.87%	7.41%
2024	105	95	136										336
pro se 7	5	7	6										18
pro se 13	4	0	0										4
pro se with BPP	1	2	0										3
% Of Bankruptcies Filed	9.52%	7.37%	4.41%										6.55%
	Jan	Feb	Mar	Apr	May	Jun	Jul	Aug	Sep	Oct	Nov	Dec	YTD Total