

United States Bankruptcy Court
District of New Mexico

March 5, 2025

CM/ECF Real Time Statistics

February 2025 Report

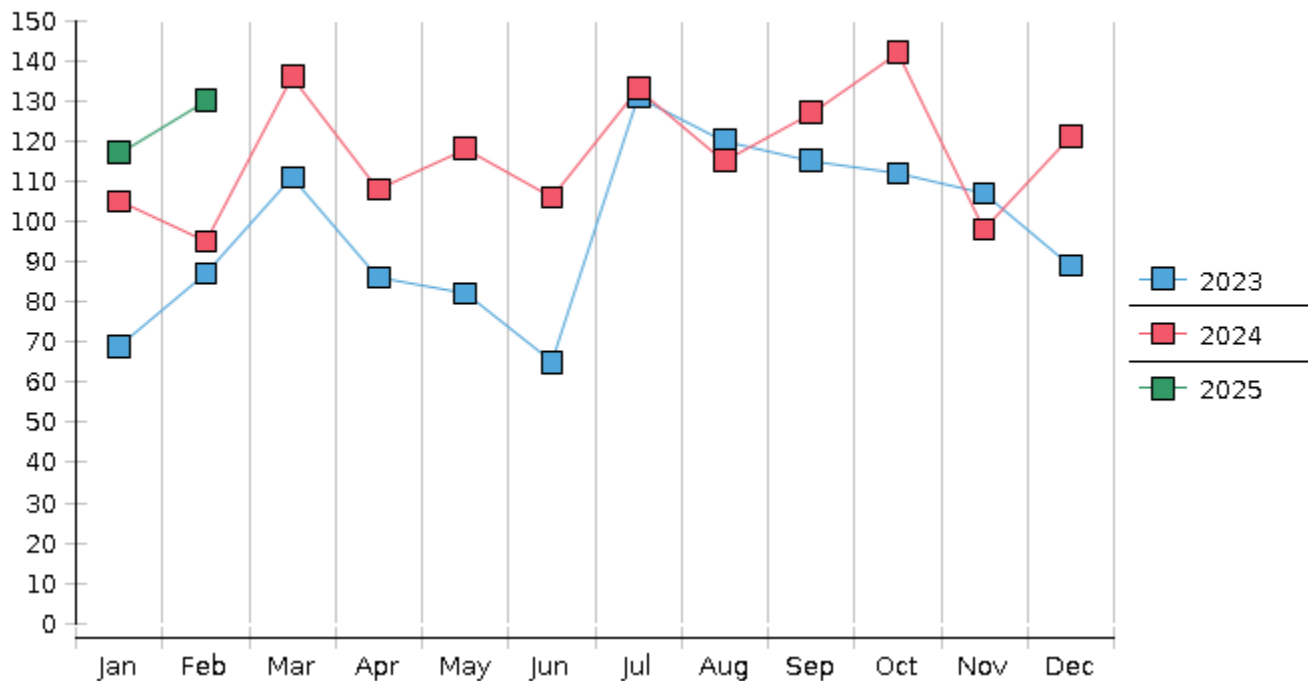
Capsule View	Feb 2025	Jan 2025	Feb 2024	% Change	
	this month	last month	this month last year	from last month	from this month last year
Bankruptcies Filed					
Chapter 7	117	99	86	18.18%	36.05%
Chapter 11	1	1	1	0%	0%
Chapter 12	0	0	0	0%	0%
Chapter 13	12	17	8	-29.41%	50%
TOTAL BANKRUPTCY FILINGS	130	117	95	11.11%	36.84%
Adversaries					
Adversaries Filed	4	4	2	0%	100%
YEAR-TO-DATE	2025(CY)	2024(LY)	% Change		
BANKRUPTCIES FILED²			CY - LY		
Chapter 7	216	178	21.35%		
Chapter 11	2	2	0%		
Chapter 12	0	0	0%		
Chapter 13	29	20	45%		
<u>TOTAL FILINGS</u>	247	200	23.5%		
BANKRUPTCIES PENDING⁽¹⁾⁽²⁾					
Chapter 7	438	446	-1.79%		
Chapter 11	17	20	-15%		
Chapter 12	1	0	100%		
Chapter 13	547	591	-7.45%		
<u>TOTAL PENDING</u>	1,003	1,057	-5.11%		
ADVERSARY PROCEEDINGS					
Filed	8	7	14.29%		
<u>TOTAL PENDING¹</u>	31	45	-31.11%		
AVERAGES					
Chapter 7 Average Disposition ³ in Days	126	137	-8.03%		
Chapter 13 Average Disposition ³ in Days	1142	1149	-0.61%		
Chapter 13 Average Days to Confirmation	158	171	-7.6%		

1 Pending totals are generated from CM/ECF on a time frame ending on the last day of the month.

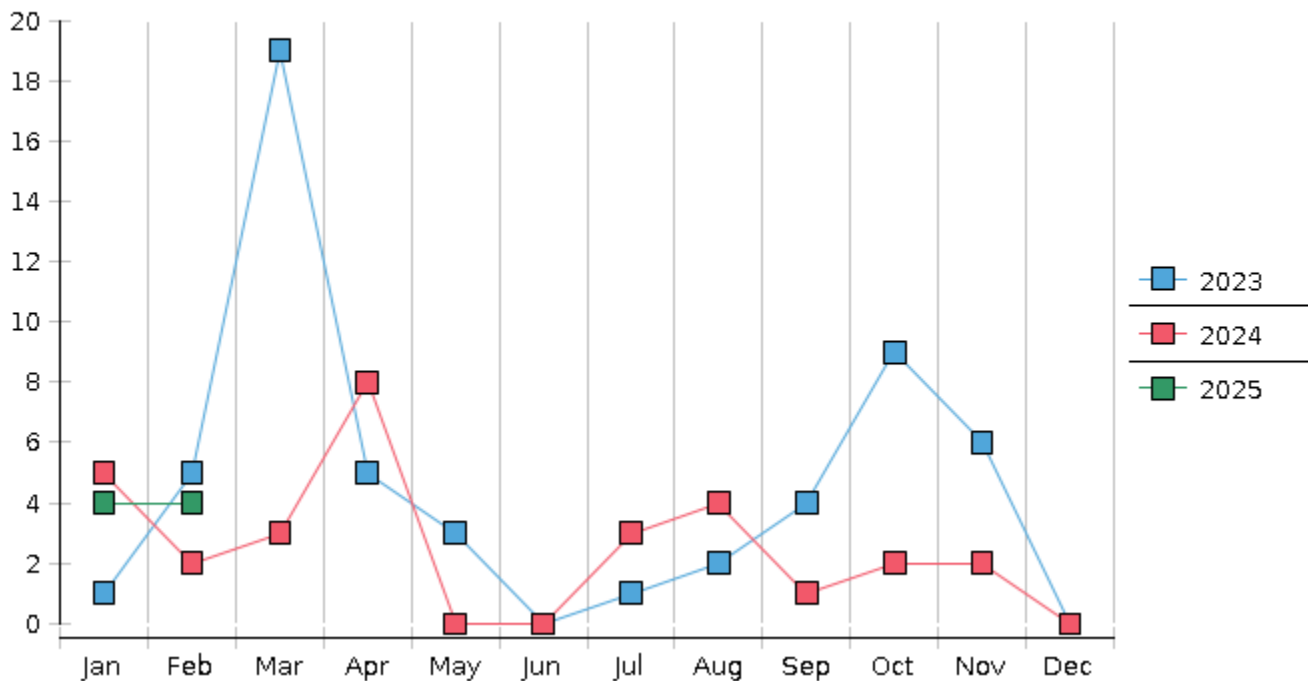
2 Chapter breakdowns are pulled from the Dynamic CM/ECF Database and may change over time due to conversions or other case changes.

3. Average disposition represents number of days from filing to discharge/dismissal of case.

Monthly Bankruptcy Filings



Monthly Adversary Filings



United States Bankruptcy Court - District of New Mexico
 Pro Se Filings

	Jan	Feb	Mar	Apr	May	Jun	Jul	Aug	Sep	Oct	Nov	Dec	YTD Total
2024	105	95	136	108	118	106	133	115	127	142	98	121	1,404
pro se 7	5	7	6	2	7	9	5	8	6	7	7	6	75
pro se 13	4	0	0	1	1	0	5	2	4	2	1	2	22
pro se with BPP	1	2	0	1	2	1	2	1	1	2	0	0	13
% Of Bankruptcies Filed	9.52%	7.37%	4.41%	2.78%	7.63%	8.49%	7.52%	8.7%	7.87%	6.34%	8.16%	6.61%	6.91%
2025	117	130											247
pro se 7	8	6											14
pro se 13	1	3											4
pro se with BPP	1	2											3
% Of Bankruptcies Filed	7.69%	6.92%											7.29%
	Jan	Feb	Mar	Apr	May	Jun	Jul	Aug	Sep	Oct	Nov	Dec	YTD Total