

United States Bankruptcy Court  
District of New Mexico

March 1, 2024

CM/ECF Real Time Statistics

**February 2024 Report**

Capsule View	Feb 2024	Jan 2024	Feb 2023	% Change	
	this month	last month	this month last year	from last month	from this month last year
<b>Bankruptcies Filed</b>					
Chapter 7	86	92	70	-6.52%	22.86%
Chapter 11	1	1	0	0%	100%
Chapter 12	0	0	0	0%	0%
Chapter 13	8	12	17	-33.33%	-52.94%
<b>TOTAL BANKRUPTCY FILINGS</b>	95	105	87	-9.52%	9.2%
<b>Adversaries</b>					
Adversaries Filed	2	5	5	-60%	-60%
<b>YEAR-TO-DATE</b>					
	<b>2024(CY)</b>		<b>2023(LY)</b>	<b>% Change</b>	
<b>BANKRUPTCIES FILED<sup>2</sup></b>				<b>CY - LY</b>	
Chapter 7	178		125	42.4%	
Chapter 11	2		0	200%	
Chapter 12	0		0	0%	
Chapter 13	20		31	-35.48%	
<b><u>TOTAL FILINGS</u></b>	200		156	28.21%	
<b>BANKRUPTCIES PENDING<sup>(1)(2)</sup></b>					
Chapter 7	434		428	1.4%	
Chapter 11	22		19	15.79%	
Chapter 12	0		0	0%	
Chapter 13	601		656	-8.38%	
<b><u>TOTAL PENDING</u></b>	1,057		1,103	-4.17%	
<b>ADVERSARY PROCEEDINGS</b>					
Filed	7		6	16.67%	
<b><u>TOTAL PENDING<sup>1</sup></u></b>	45		43	4.65%	
<b>AVERAGES</b>					
Chapter 7 Average Disposition <sup>3</sup> in Days	137		183	-25.14%	
Chapter 13 Average Disposition <sup>3</sup> in Days	1149		1169	-1.71%	
Chapter 13 Average Days to Confirmation	171		127	34.65%	

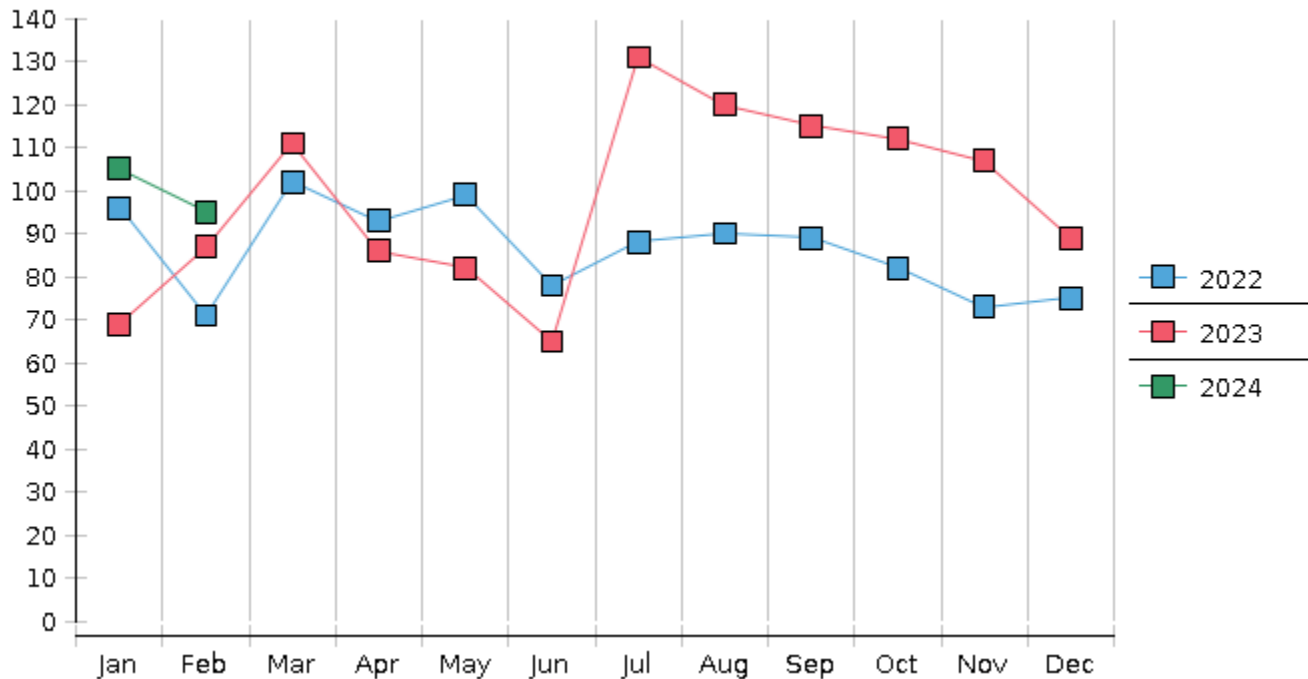
1 Pending totals are generated from CM/ECF on a time frame ending on the last day of the month.

2 Chapter breakdowns are pulled from the Dynamic CM/ECF Database and may change over time due to conversions or other case changes.

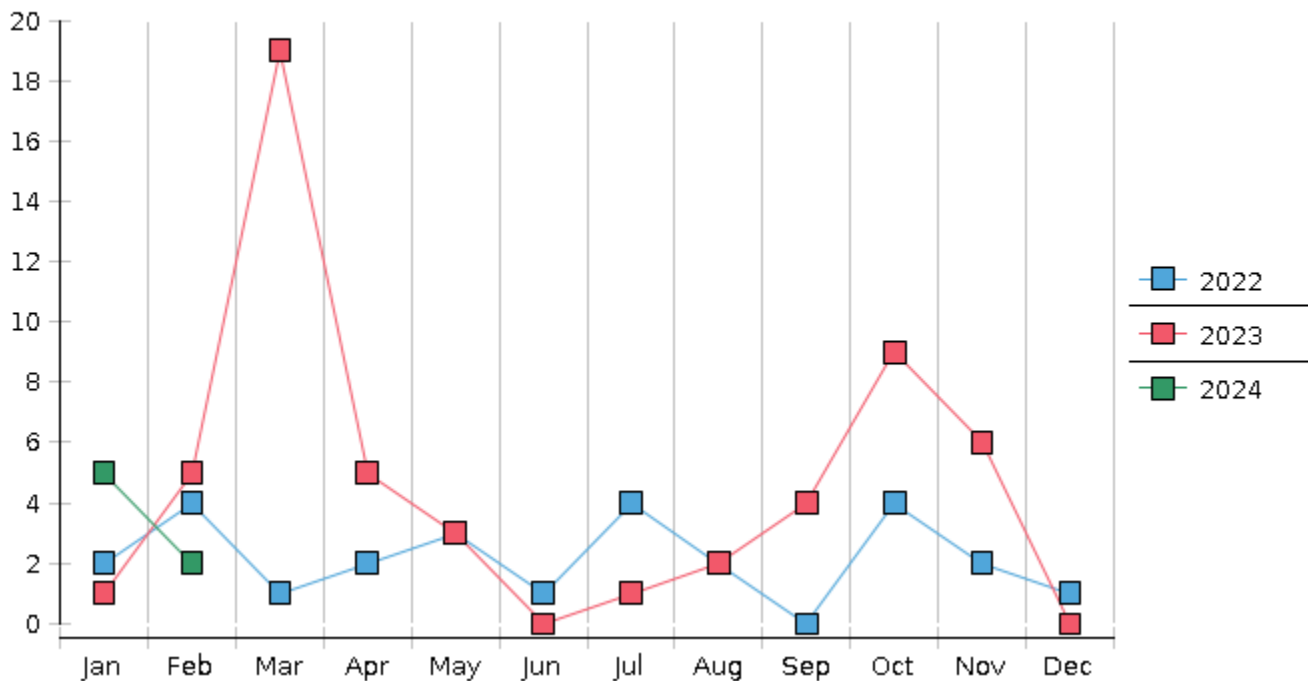
3. Average disposition represents number of days from filing to discharge/dismissal of case.



### Monthly Bankruptcy Filings



### Monthly Adversary Filings



United States Bankruptcy Court - District of New Mexico  
 Pro Se Filings

	Jan	Feb	Mar	Apr	May	Jun	Jul	Aug	Sep	Oct	Nov	Dec	YTD Total
2023	69	87	111	86	82	65	131	120	115	112	107	89	1,174
pro se 7	6	5	3	5	7	2	6	6	10	6	6	4	66
pro se 13	0	1	4	2	2	1	0	2	2	2	2	3	21
pro se with BPP	1	1	0	2	2	0	2	0	2	2	0	1	13
% Of Bankruptcies Filed	8.7%	6.9%	6.31%	8.14%	10.98%	4.62%	4.58%	6.67%	10.43%	7.14%	7.48%	7.87%	7.41%
2024	105	95											200
pro se 7	5	7											12
pro se 13	4	0											4
pro se with BPP	1	2											3
% Of Bankruptcies Filed	9.52%	7.37%											8%
	Jan	Feb	Mar	Apr	May	Jun	Jul	Aug	Sep	Oct	Nov	Dec	YTD Total